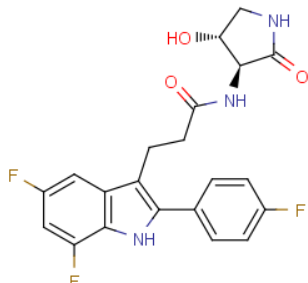


Name: Inaxaplin Cat#: EX-A6319

Structure



Molecular Weight	417.38	Storage	Cool dry place(Store at -20°C, away from the light)
Formula	C21H18F3N3O3		
CAS No.	2446816-88-0	Synonyms	VX-147

Solubility (25°C) *	In vitro	DMSO	Soluble
		Ethanol	N/A
		Water	N/A
	In vivo (should be freshly prepared each time)		

* <1 mg/ml means slightly soluble or insoluble.

* Please note that Selleck tests the solubility of all compounds in-house, and the actual solubility may differ slightly from published values. This is normal and is due to slight batch-to-batch variations.

Preparing Stock Solutions:

Concentration	Mass	1 mg	5 mg	10 mg
	Volume			
1 mM		2.3959 mL	11.9795 mL	23.9590 mL
5 mM		0.4792 mL	2.3959 mL	4.7918 mL
10 mM		0.2396 mL	1.1979 mL	2.3959 mL

*The above data is based on the product molecular weight 417.38.

Biological Activities:

Description	Inaxaplin is an apolipoprotein L1 (APOL1) function inhibitor (WO2020131807A1, compound 2). Inaxaplin can be used for the research of kidney disease. ^[1]
IC ₅₀ & Target:	APOL1 ^[1]

References	[1]. WO2020131807
-------------------	-------------------